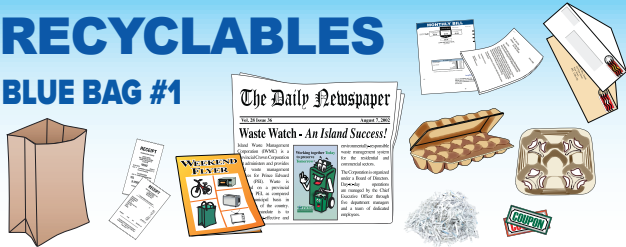


SORTING GUIDE

Customer Service: 1-888-280-8111
Sorting information: iwmc.pe.ca/sort

RECYCLABLES

BLUE BAG #1

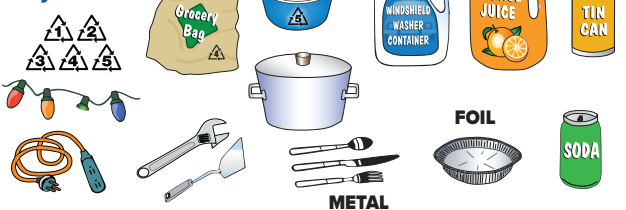


USE TRANSPARENT • Recyclables must be clean & dry.
BLUE BAGS ONLY! • Ensure blue bags are tied securely.

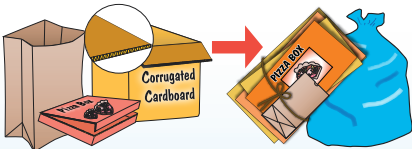
BLUE BAG #2



Plastics with symbols:



PLACE THE ITEMS LISTED BELOW BESIDE YOUR BLUE BAGS



LARGE METAL ITEMS

- ✓ bundle multiple items (tent poles, curtain rods, etc.)
- ✓ less than 4 ft & 50 lb
- ✓ dismantle large items
- ✗ no propane cylinders, tanks, or items containing ozone-depleting substances (e.g. Freon)

PAPER BAGS & CORRUGATED CARDBOARD
(Collapsed & bundled)



COMPOST



Food Waste (including bones & shells)



Food-Soiled Paper, Napkins, Paper Towels, Tissues, Paper Food Bags, Wrapping Paper (non-foil/glitter)



TIP:
USE
EMPTY
BOXBOARD
TO GATHER
KITCHEN
SCRAPS

NO BAG IS BEST!

If bags are necessary:

- ✓ Paper bags are preferred
- ✓ Film compostable bags must be identified by:



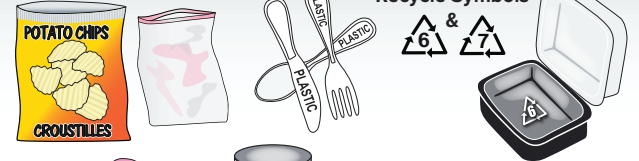
✗ DO NOT USE PLASTIC BAGS



**NO Plastic
NO Metal
NO Glass
IN COMPOST CART**

WASTE

Non-Recyclable Plastics with no Symbols or Recycle Symbols



NO BAG IS BEST!

If bags are necessary:

- ✓ Use clear, transparent plastic bags
- ✗ No blue bags
- ✗ No solid-coloured bags
- ✗ No paper bags



DO NOT USE solid-coloured bags

EXCESS MATERIALS:

When your cart is full, drivers will accept up to **TWO** open rigid containers, extra bags, or bulky items placed **BESIDE** the appropriate cart. If bags are used, paper bags must be used for **COMPOST**, and clear, transparent plastic bags for **WASTE**.
All excess items, including additional bags and containers placed beside carts must be under 50 lb and 4 ft.

SPECIAL DISPOSAL

NOT COLLECTED
CURBSIDE AT ANY TIME

PROPANE TANKS

30 lb. or less: Propane tank exchange location or WWDC*

Over 30 lb.: Propane dealer

Cylinders: WWDC*

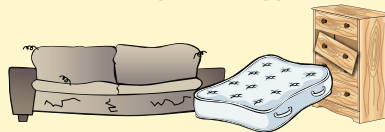
For businesses only cylinders are accepted at WWDC and disposal fee applies



LARGE BULKY FURNITURE

Items larger than **4 ft** or heavier than **50 lb** are accepted at WWDC* for **FREE**

Businesses: disposal fee applies



LARGE APPLIANCES

Bring to WWDC* for **FREE** disposal.



TIRES

Return to place of purchase or WWDC*. *Tires without rims are FREE*



PRINTER CARTRIDGES

Accepted at WWDC* for **FREE** and at most electronic retailers. Search *Printer Cartridges* at www.iwmc.pe.ca/sort for more information.



HAZARDOUS WASTE

RESIDENTS: Bring to a WWDC* for **FREE** disposal - **Must be in sealed original container.** Jerry cans and other containers must be left behind with contents.

BUSINESSES: Businesses must dispose of hazardous material through a hazardous waste carrier. Visit www.iwmc.pe.ca/commercial for more information.

- fuel (gasoline, kerosene, etc.)
- silicone, caulking, adhesives
- aerosol cans (with contents)
- cosmetics & personal care products

- pesticides, herbicides, insecticides
- items with mercury
- pet medications
- cleaning products and more



STEWARDSHIP PROGRAMS



AUTOMOTIVE LEAD ACID BATTERIES

Bring to WWDC* for **FREE** disposal. Also accepted at place of purchase and licensed bottle depots.

LIGHT BULBS

All types of bulbs removed from fixture are accepted for **FREE** at WWDC*. Call in advance for more than 16 bulbs.

Visit www.productcare.org for drop-off locations and disposal instructions.

PRESCRIPTIONS, OVER-THE-COUNTER MEDICATIONS AND NATURAL HEALTH SUPPLEMENTS

RESIDENTS: Return to participating pharmacies. For disposal instructions & drop-off locations visit www.healthsteward.ca/returning-medications

BUSINESSES: Search **Medication** at www.iwmc.pe.ca/sort

MEDICAL SHARPS (Needles, Syringes, Lancets, Epi-Pens)

RESIDENTS: Pick up free sharps container at participating pharmacies. When container is full, return to pharmacy. For disposal instructions & drop-off locations visit www.healthsteward.ca/returning-medical-sharps

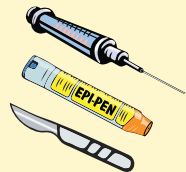
BUSINESSES: Search **Medical Sharps** at www.iwmc.pe.ca/sort

AUTOMOTIVE FLUIDS (less than 50L container sizes)

Motor oil, oil filters and containers; automotive antifreeze and containers; aerosol cans for propelled lubricant and brake cleaner. Bring to WWDC* for **FREE** disposal or return to collection facilities listed at www.uoma-atlantic.com

PAINT, STAINS AND EMPTY CONTAINERS

Bring to WWDC* for **FREE** disposal, exceptions apply. Visit www.productcare.org for limits, guidelines and additional drop-off locations.



RECHARGEABLE AND NON-RECHARGEABLE BATTERIES

Accepted for **FREE** at WWDC*. Visit www.call2recycle.ca for disposal instructions and additional drop-off locations. eMobility batteries are only accepted by participating retailers.

AGRICULTURAL PLASTICS

Agricultural plastics such as relatively clean and dry silage wrap and twine are received free at WWDC's. For a complete list of what to recycle and where, visit cleanfarms.ca

ELECTRICAL AND ELECTRONIC PRODUCTS

Bring to WWDC* for **FREE** disposal. Call in advance when bringing more than 25 items. For additional drop-off locations visit www.recyclemyelectronics.ca/pei/where-can-i-recycle

- Portable Air-Treatment Appliances (no A/Cs)
- Countertop Appliances
- Personal Care Appliances
- Time & Weight Measurement Devices
- Computers and Computer Accessories
- Phones and Pagers
- TVs and Monitors
- Photocopiers, Printers, Scanners and Multifunction Office Equipment
- Portable, Home and Vehicle Audio/Video Devices and Accessories
- Electronic Readers
- Global Positioning Systems (GPS)
- Video Game Devices and Accessories



For a complete list of items, search **Sorting Guide** at www.iwmc.pe.ca/sort or visit www.recyclemyelectronics.ca/pei/what-can-i-recycle

***WWDC = WASTE WATCH DROP-OFF CENTER**